



Place du
Panthéon
les MonumentalEs



PREAMBLE

" Reinvent our squares " - 7 Parisian squares
In June 2015, Anne Hidalgo, Mayor of the City of Paris, announced the launch of the project "Réinventons nos places" (reinvent our squares) through which she affirmed her commitment to ecology. Seven emblematic city squares were chosen to be redesigned and redeveloped, to give more space to pedestrians and non-vehicular transport. Her desire for a more appeased city points at vehicles as generators of anxiety and thus the project's intent is to "Give more space to those who want to live in a more peaceful city, with fewer cars and less stress."

In 2015 and 2016, the first phase of consultation associated Parisians, with users to reflect upon the transformation of the square. This established the broad expectations of those who use this square, the associations and institutional partners, through the development of a shared diagnosis that defined the objectives to be pursued.

The 7 squares : Bastille, Fêtes, Gambetta, Italie, Nation, Madeleine and Panthéon have similar traits. They are all circumnavigated by a continuous flow of motor vehicles. From the outset, the Mairie (Town hall) asserted its desire to appoint multi-disciplinary collectives (landscape architects, architects, programmers, urban planners, sociologists ...).

A first group of multi-disciplinary actors, Dédale and Parenthèse collectives, formed for the occasion, led a part of this process.

In the second phase (2017) of prefiguration, Les MonumentalEs collective engaged with the space to discuss and collect the wishes of the users and to co-design the responses to these aspirations.

The collective Les MonumentalEs engaged with and undertook experiments in the squares of Madeleine and Panthéon.

Les MonumentalEs
The collective Les MonumentalEs is a multi-disciplinary group of actors created within the framework of the project "Réinventons nos places".
Les MonumentalEs assembles architects, landscape architects, sociologists, ethnologists, urban planners, sustainable development consultants, gender and equality specialists, social insertion consultants and graphic designers. Its approach is transversal : historical, economic, cultural, ecological and social.
It is composed of : **Emma Blanc Landscape Architect** (project manager), **Collectif Etc**, **Genre et Ville**, **Albert & Co**, and **Emmanuelle Guyard**.

" Reinvent our squares "
7 Parisian squares



Existing
parking places
on Place du Panthéon



Existing
students inhabiting the paving
on Place du Panthéon



INTRODUCTION: STEP BY STEP

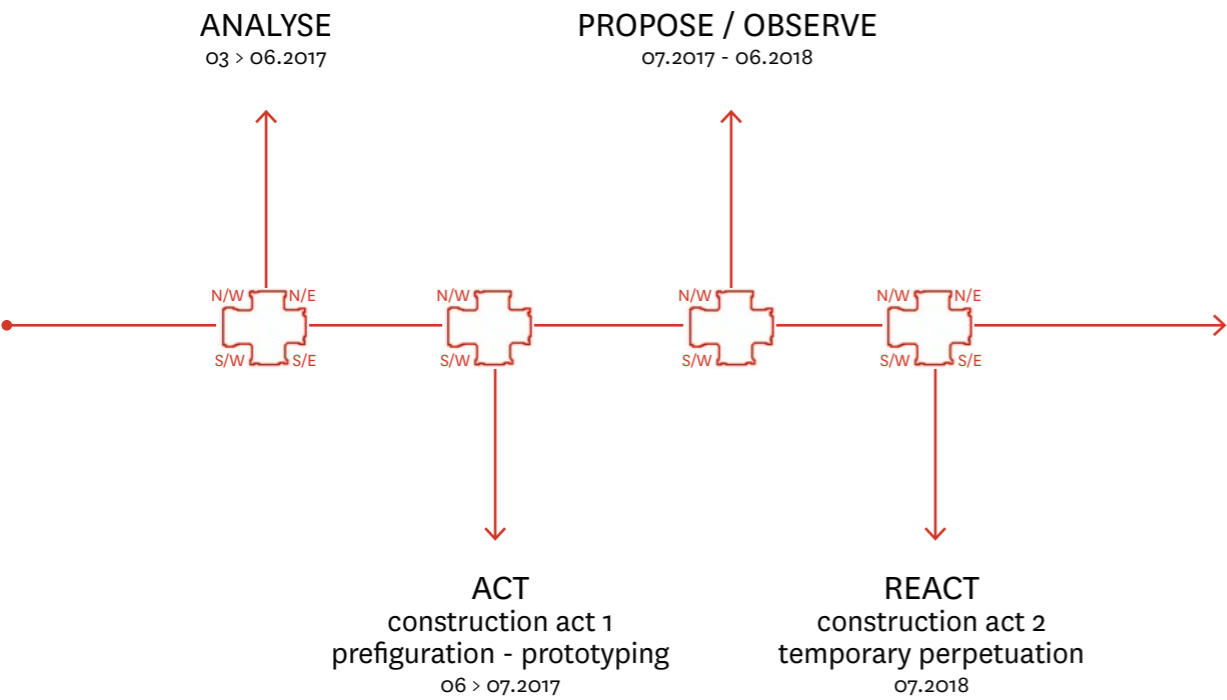
With Les MonumentalEs we developed an approach allowing us to undertake various experiments with prototype uses and spaces over a relatively long time (March 2017 to July 2018).

The multi-disciplinary structure of the collective allowed the project to develop an approach that borrows from new forms of fabricating the city (tactical urban planning, architectural permanency...)

In a kiosk-container installed in the square, clad by glorious guardian statues, we immersed ourselves in order to :

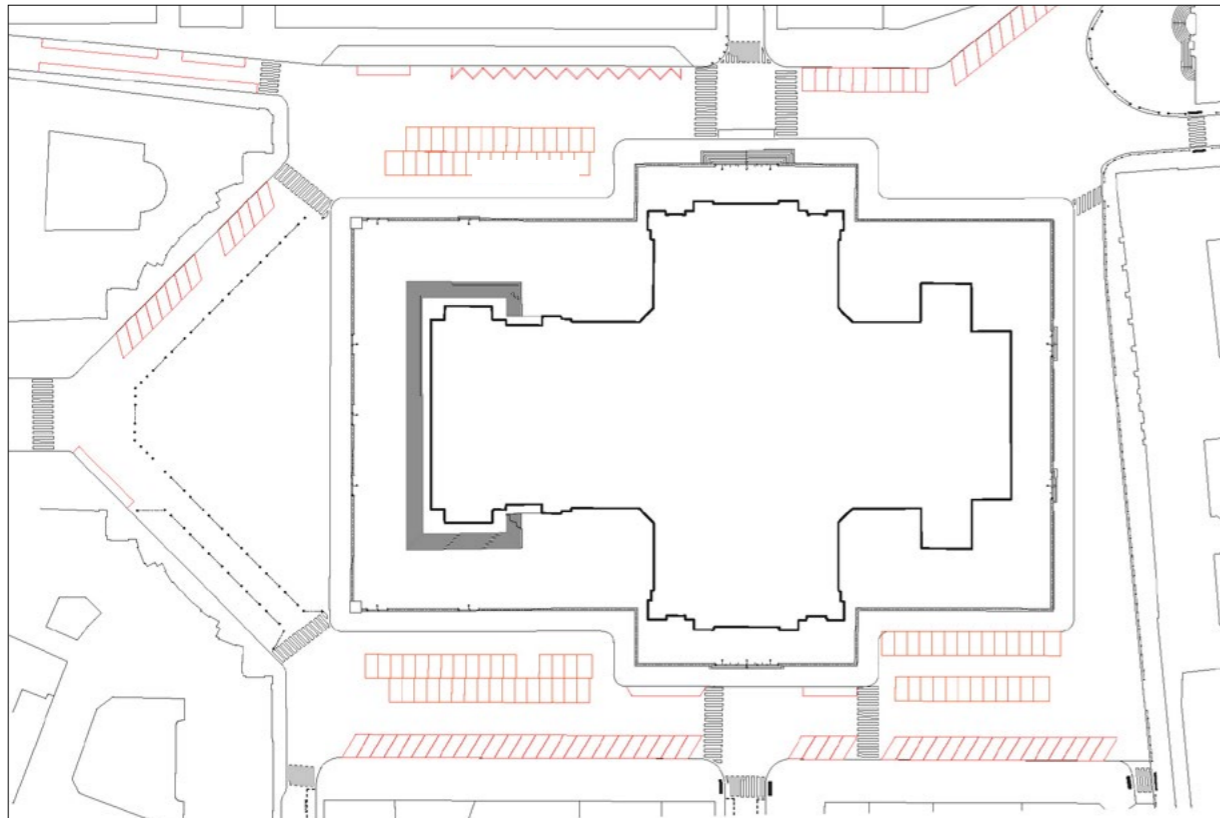
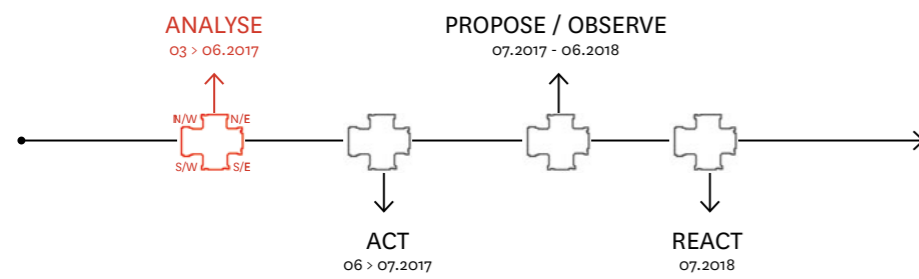
- Maintain a permanent presence and get in touch with all those who were wondering about the future of this space.
- Animate workshops and exhibitions.
- Observe, investigate, analyse, discuss our inquiries and research directions.
- Draw, introduce materials and prototypes, test and manufacture during two open-air construction sessions and site works.

The challenge for Les MonumentalEs has been to establish itself in such a symbolically charged place, to create a proposal that responds step by step to the expectations of the inhabitants of a resilient and inclusive city.



ANALYSE

03 > 06.2017



ANALYSE
03 > 06.2017
USES AND SPATIALITY:
PERMANENCE

"We carried out a sensitive analysis of the square : a multi-dimensional approach, based on feelings of the space. Perceptions of noise, sunshine, formal and informal uses were cross-referenced with more traditional urban data. These observations and feedback, coupled with the historical and spatial dimension of the square, led us to develop of a sober, abstract and inclusive design layout."

In March 2017, we laid the first stones, while establishing ourselves in a customised glazed shipping container made available by the city for each of the squares in project. At the same time, we built a kiosk that allowed us to be easily identified and in which local residents could stop, ask for information or give their opinion. We installed construction and mediation tools that enabled animation, monitoring and the hosting of events throughout the project process.

Two "permanents" in our team shared their daily work between the Place de la Madeleine and the Place du Panthéon. Beyond the almost continuous mediation, which they enabled, there was the observation and analysis of the life of the different squares, the collection of dreams and grievances, animation of workshops, meetings and mobilisation of different actors and organization of events.

A permanent in situ exhibition, the glazed shipping container materialised these actions and the ongoing process.

This permanence allowed us to experience the site on a daily basis, to understand its uses, to meet passers-by, residents of the area, tourists - to inform them of the project and get them involved. The kiosk-container is a central part of the construction principles and the general purpose of the development : we had to start with a meeting, a repeated familiarisation with the space and its users, to nourish the project in the square, to understand daily and empirically its specific issues and to raise issues that would have otherwise remained unnoticed.

↓ The kiosk-container
↓ Base of permanence and construction workshops



Place du Panthéon - Paris-(05)- France

↓ Collection of wishes
↓ Letters, emails, post-it notes, drawings, interviews ...



Existing
march 2017

ANALYSE
03 > 06.2017
A SENSITIVE AND GENDER STUDY

Public space, contrary to popular belief, is not neutral, it is unequal at both a physical and symbolic level. Introducing equality into the process of renewing public space is thus a change of paradigm, an innovative approach.

The gender sensitive study of the Place du Panthéon resulted from a series of observations previous studies, and workshops that undertook mapping of the social uses in the place. It was conducted from March to June 2017.

Our observations questioned the capacity of spaces to accommodate and welcome people, their physiognomy, their uses, actors in the space, as well as temporalities.

In general, the Place du Panthéon is very mixed, its users are mainly male and female students and tourists. Few local residents or Parisians spend any time there. Timings are varied and largely relate to the rhythms of the Universities, surrounding colleges and the Monument itself. The lack of street furniture and services (fountains, toilets) in the square were noted as real obstacles to the appropriation of the space, that encourages the practice of sitting on the ground, thus diminishing the urban quality of the square and the notion of a hospitable city. Moreover, the imposing hard mineral surface of the place is in opposition with the desires of urban visits, with imposing temperature variations related to solar exposure with no possibility of taking cover (no trees). The square is crossed using peripheral pavements or close to the railings according to efficiency.

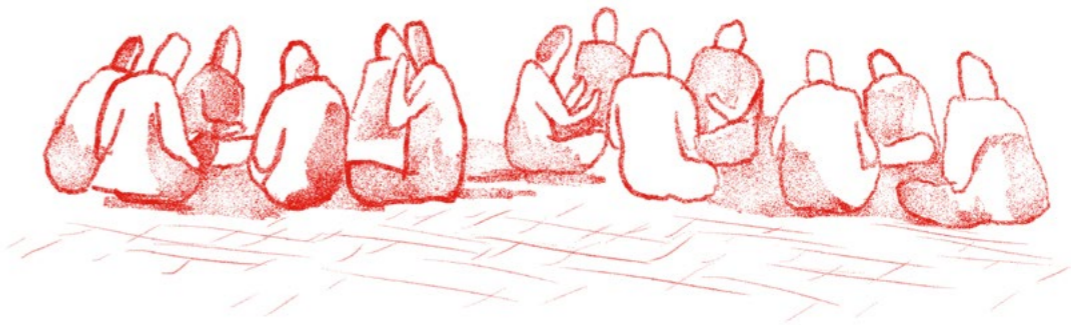
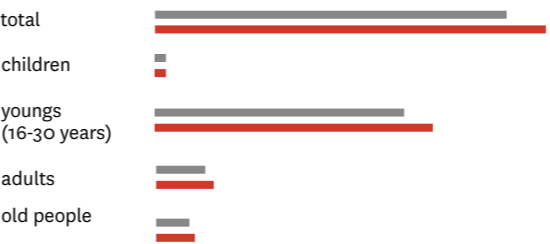
In terms of gender, the studies have allowed us to observe that despite the mixed nature of the square, the uses remain differentiated, especially regarding to the timing (for example in the evening) and in practice (women rarely sit alone in the public space and do not settle anywhere). These observations directed us towards issues of equality in public space and the question of legitimacy, which is part of a broader political and societal approach. The proposed re-development being one of the possible outcomes.

A reflection came following this in-depth research. From the design conception stage, the objective criteria for gender analysis was introduced regarding uses or non-uses, especially when deciding on the location of street furniture or equipment, and their management to avoid creating exclusive places.



↑ Suspended conversations

Overall frequentation of the square 06.2017
men / women



ANALYSE

03 > 06.2017

MATERIALS:
ALREADY THERE AND RE-USE

The materiality of this place, built on the model of "Italian-style" squares, was a crucial starting point given for this site.

Nourished by what was already there, composing with the existing elements of this emblematic place: the granite hardscape and the ornamental limestone of the facades while also allowing a new appropriation of the space through a contemporary spatial language, was the challenge we wanted to respond to by engaging in a collective approach, aimed at striking the right balance between the continuity of heritage and a transformation of the square.

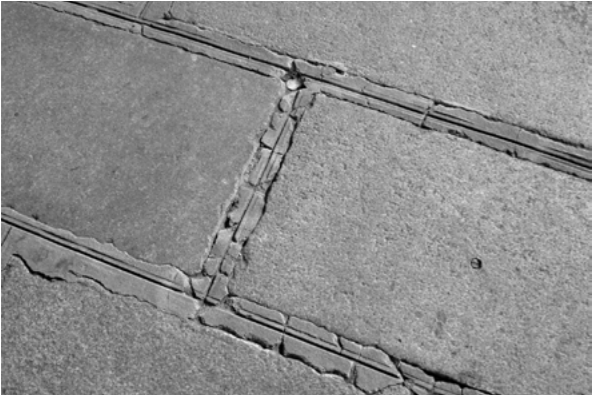
One of the stated and desired objectives was a relatively frugal-chic development of the site, with an economy of means and energies that included the opportunity to work directly with the city's municipal services, their resources and their skills sets.

A particularly inspiring visit to the CMA (Centre for Materials and Supply) made us aware of the cycle of road materials and more specifically granite stone in the city of Paris. The CMA service supplies materials for highways and public space projects in the city and also recovers installed materials, revalorizing and reusing them where appropriate.

At the CMA one finds many paving blocks, slabs, granite kerbs, but also the Mascarons (carved figures with masks sensed to ward off fate or evil spirits) which once adorned Le Pont Neuf and were replaced during its last restoration in the 19th century.

The stockpile of pavement kerbs particularly inspired us because this material, that was already present in the Place du Panthéon, takes on a whole other dimension when it is extracted from the pavement and one can appreciate it, in its entirety. This raw material, almost ubiquitous in the city is available here at the CMA (only 15km away from the site) in an overflowing amount. And there was little missing from these granite monoliths to prevent them become elements of urban furniture in their own right.

Existing large granite paving slabs of variable dimensions in the Place du Panthéon



Granite block paving in the Place du Panthéon



Pavement kerbs stored
visit to the CMA



Pavement kerbs sorted
visit to the CMA



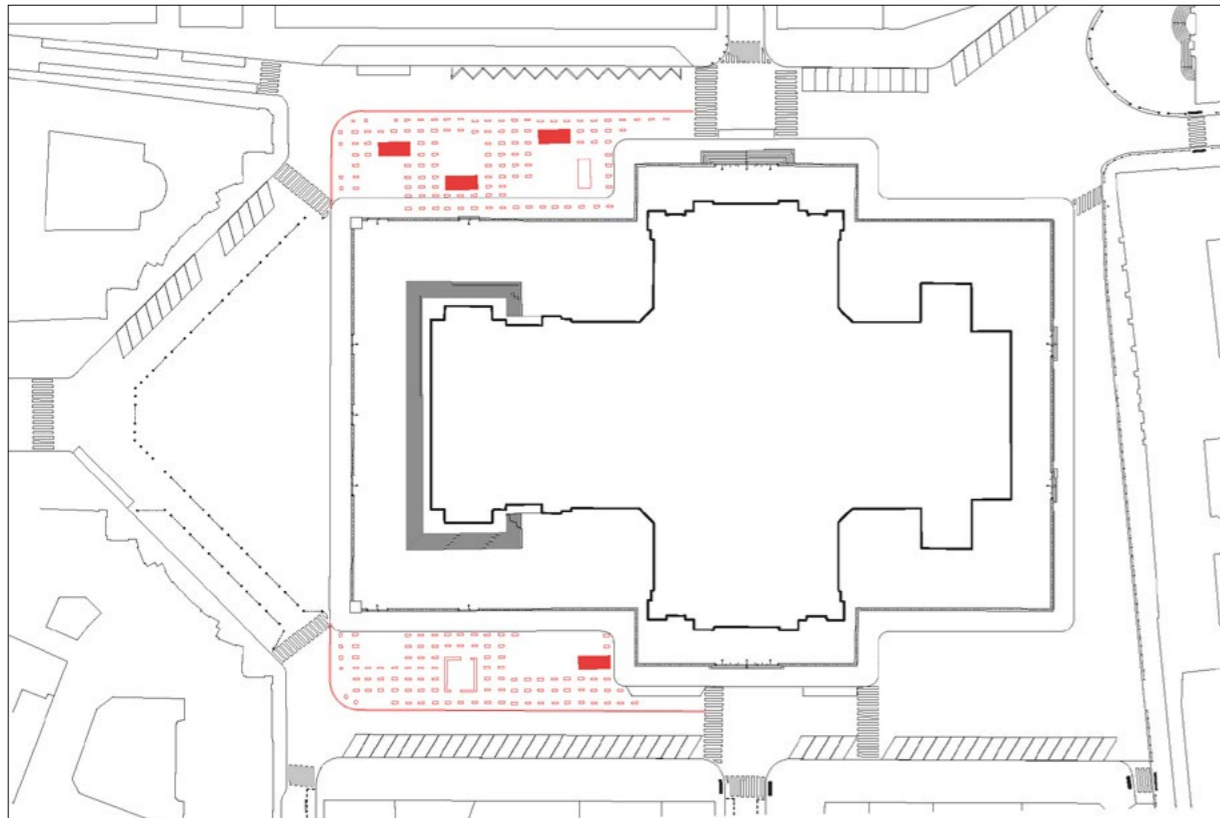
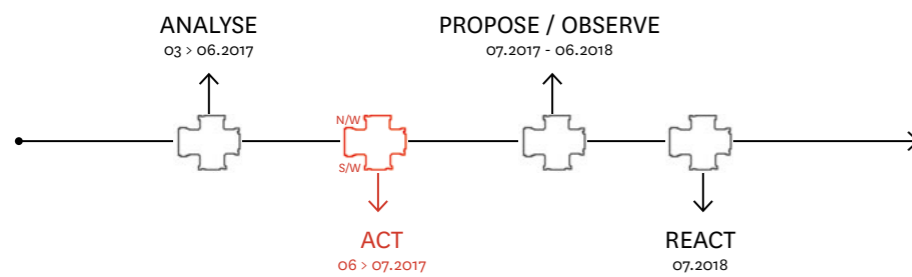
Mascarons from Le Pont
Neuf (19th century)
visit to the CMA



ACT

CONSTRUCTION - ACT 1

06 > 07.2017



ACT
CONSTRUCTION ACT 1 - 06 > 07.2017
PREFIGURATION

In parallel with this research into materials, and in an unfavourable context for co-design, we opted for an active approach - Prefiguring - that is to say the proposal of an upheaval of the space, a kind of 1:1 scale prototype that would support a physical and concrete discussion. With this raw material we imagined a structured and modular intervention.

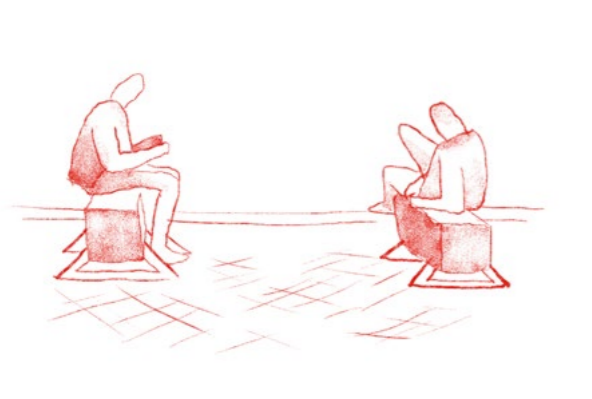
Old kerbs presented simply on timber chocks as a raw material became functional seating and were arranged in a regular and orthogonal pattern, a new matrix for the square with which we compose. In some places, open spaces in the grid form a "clearing", close to which blocks are placed upside down and notches, usually cut in the stone to accommodate timber chocks, now support large timber platforms.

The timber platforms, added to the gridded arrangement of the granite blocks, are like large street furniture of a deliberately abstract form, because our intention is not to predetermine or overdetermined their use, nor the typology of users.

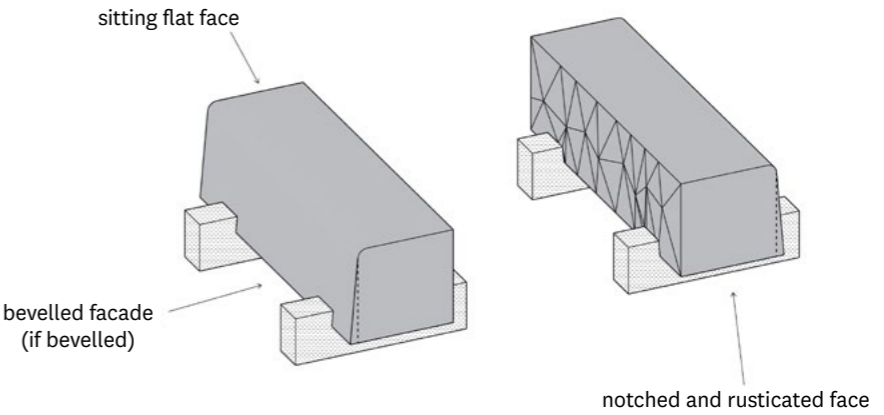
Largely dimensioned (each approximately 25m²), they participate in the game of scale "vis-a-vis" the Panthéon: large enough to assume the balance of power with the Monument and at the same time coherent with the current and future usages of the place. This street furniture makes it possible to respond to the revealed social needs, to the coherence in the site and to the reuse of materials, while composing a unified, sober and simple space.

"Our aim is to work with the grain of site, to go with the obvious and propose the maximum number of uses with the minimum of means, based on a simple and restrained design. The objective in June in the North-West and South-West quarters is the co-construction and in situ experimentation to test the uses and the plurality of appropriation: a place of pause, relaxation, work, reading, communication, waiting, exchange, culture, play ..."

During the first prototype construction workshop, the Masca-rons (rescued from the last renovation of Le Pont-Neuf) found their place above the granite in response to the surrounding ornamental limestones facades. They act as plinths for some platforms. While maintaining guard, they also serve as back rests and provide a "mises en scène" for photographs.



Timber platform
metropolitan street furniture



Kerb stones elevated to the
status of benches

ACT

CONSTRUCTION ACT 1 - 06 > 07.2017

PUT IN MOTION

We undertook all the site construction in-situ and engaged two companies specializing in social insertion who employed workers to assist us in the realization of the street furniture: Travail et Vie and l'ESAT de la Bièvre.

It was about providing rewarding work for women and men and strengthening their skill sets in specific trades. As such nearly 550 hours of social insertion work was arranged. The valued trades consisted of joinery, carpentry, and locksmithing. An even number of women and men were employed during site construction.

In order to make visible and playful the modularity and evolutive nature of the development we created a tool for manoeuvring blocks of stone dedicated to this project. Working with materials almost extracted from the site, encouraged us to seek inspiration from the old machines and cranes from quarries.

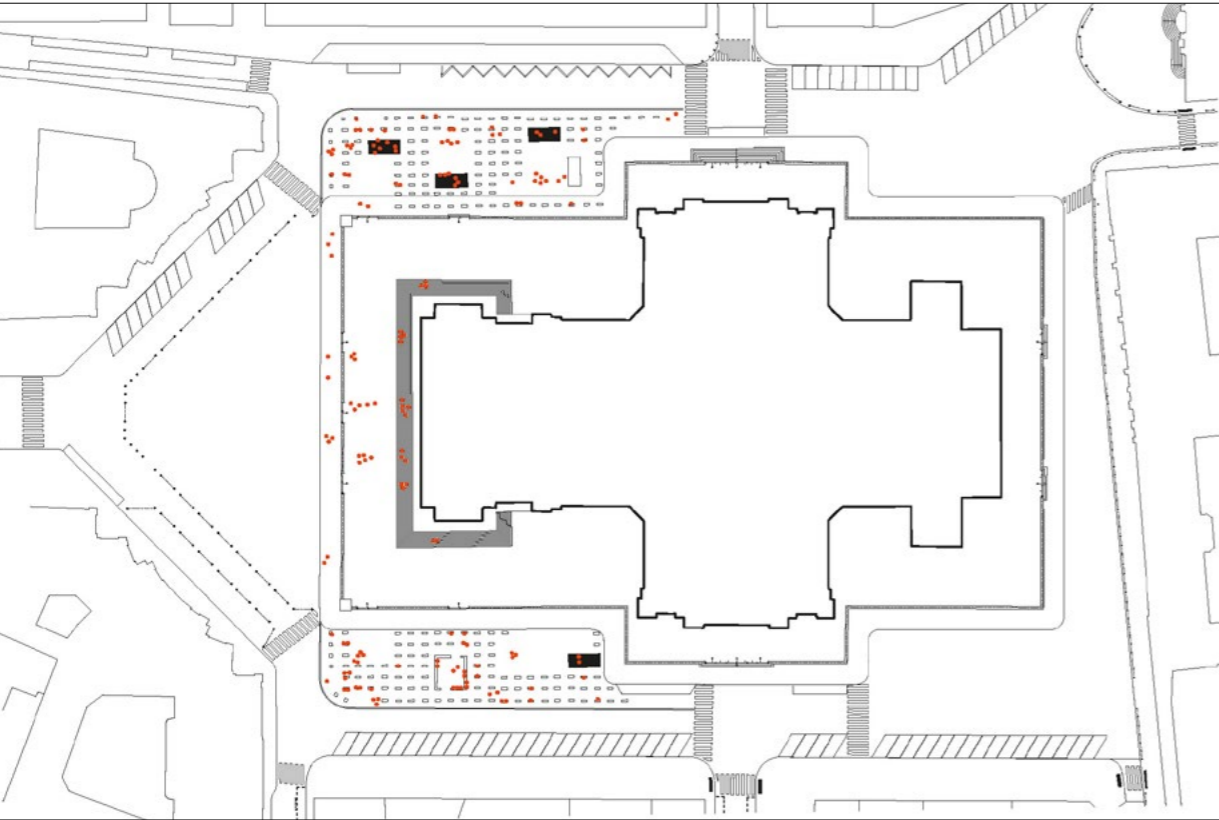
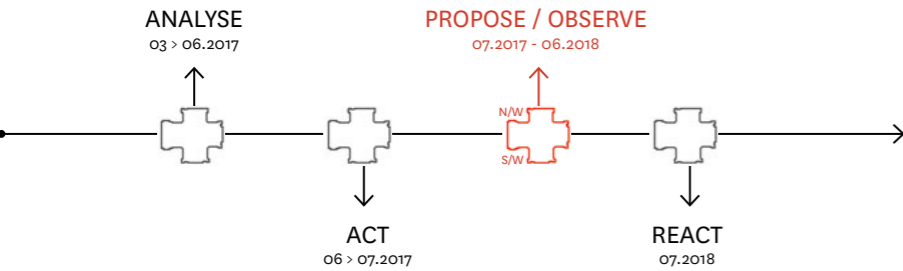
Technologically rudimentary but spectacular in its movement, the "Translateuse" is manoeuvrable by 3 or more people and allows the displacement of the Mascarons and kerb stones, while bridging over those already in place. Built during the first construction phase, it subsequently enabled us to adjust, repair and evolve the composition of the square.

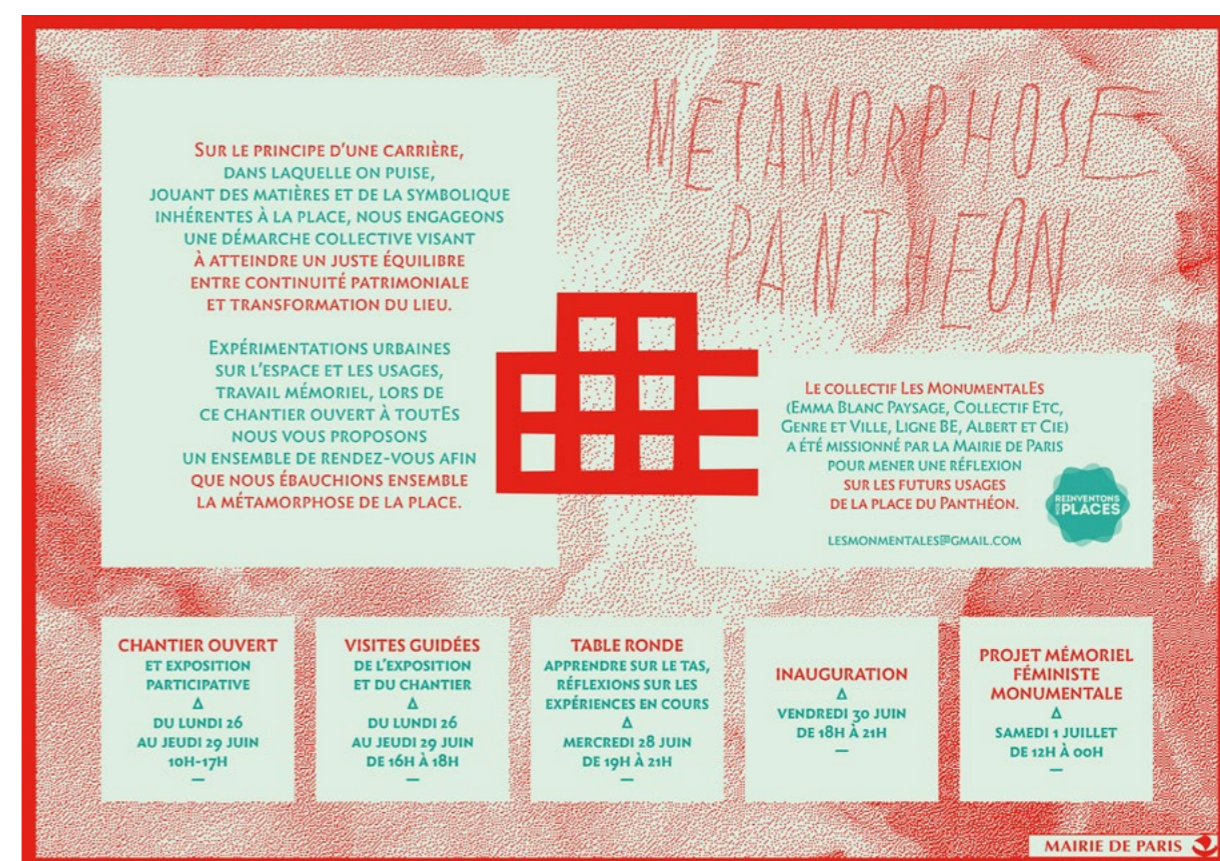
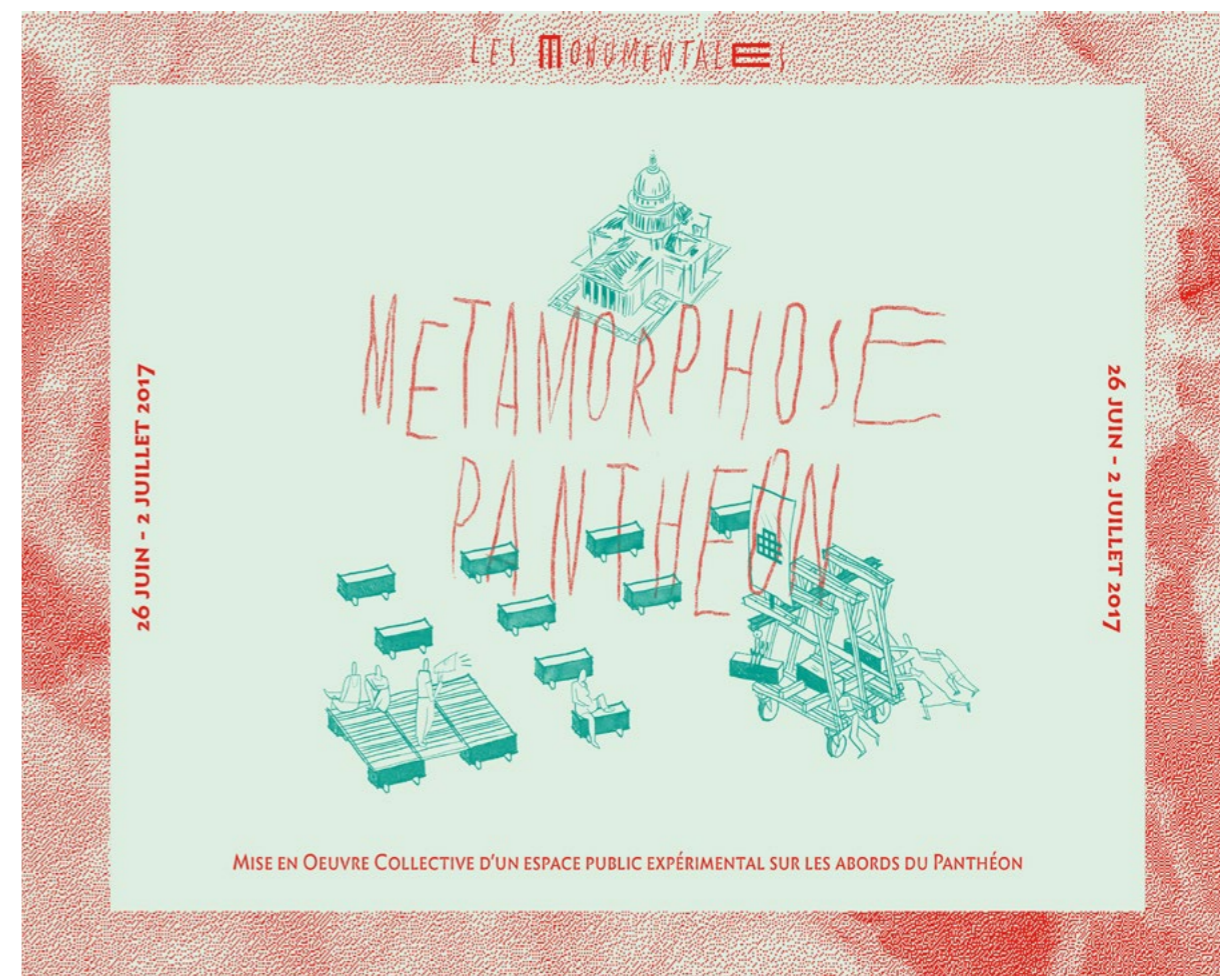
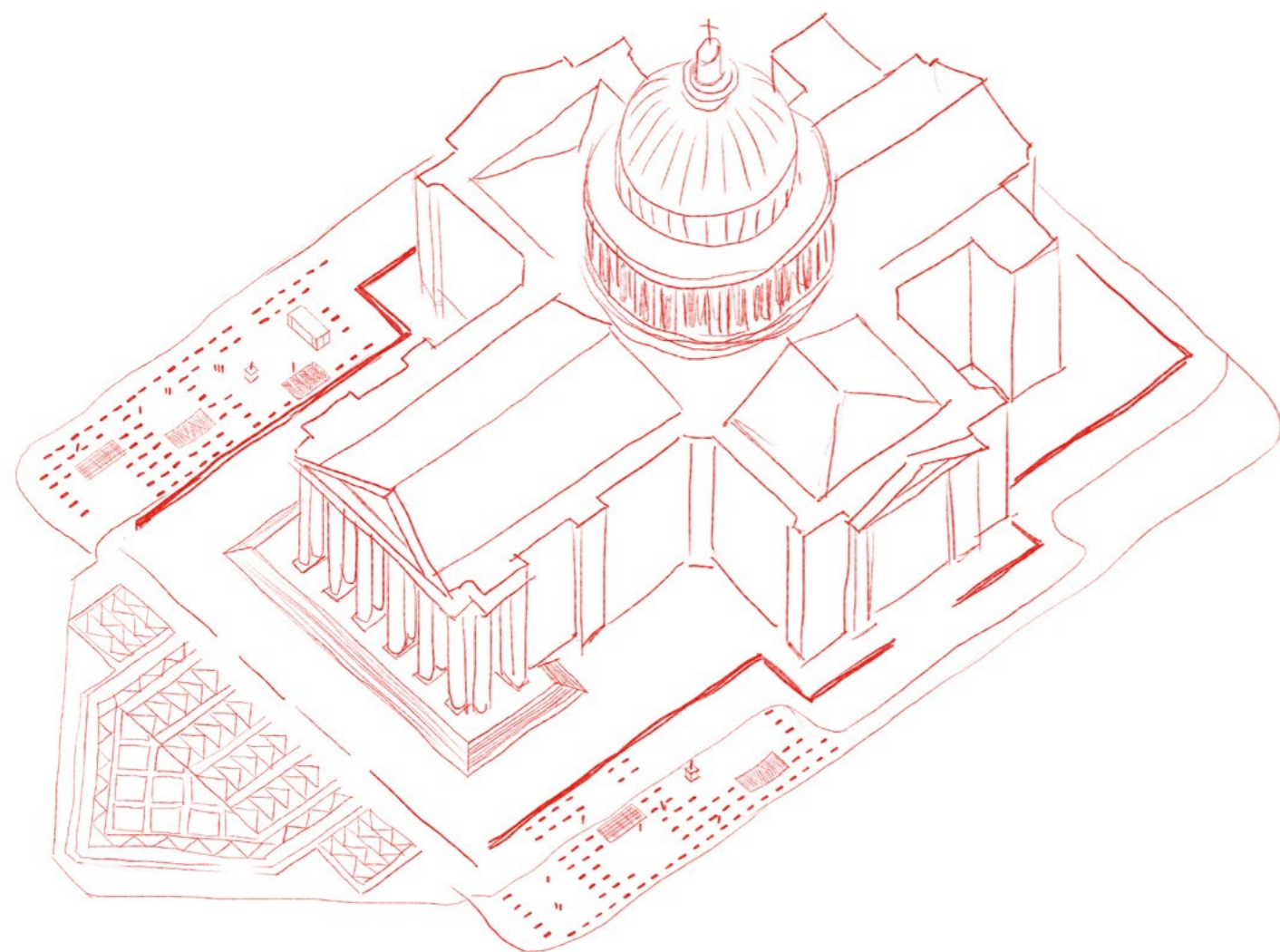
The "Translateuse" takes its name from "translation": the act of moving the corpse of a great man or woman to enable them to "entrer au Panthéon" (be enshrined in the Panthéon).



PROPOSE / OBSERVE

07.2017 > 06.2018







PROPOSE / OBSERVE

07.2017 > 06.2018

FEEDBACK ON USES

The new configuration of the Place du Panthéon, from this first phase, goes beyond the prerogative of removing parking spaces from one side or other of the monument. The site, once freed up, contributes significantly to developing and displaying the high quality spaces. A veritable typology of place resurfaces : a place for life, stays, visits, strolling but also an articulation between the surrounding streets and neighbourhood.

The visual and sensitive re-appropriation at the scale of the square helps everyone of all genders with legibility and an understanding of the site. The large spaces, long views and the establishment of common spaces enhance the immediate legibility and the meaning given to the layout: a space without restrictions for everyone.

This factor is of particular importance for reducing the sense of insecurity. Decreasing vehicular traffic levels soothes the periphery of the square and reduces the noise level significantly. The ambient sound is an important marker for everyone and produces real urban quality.

The spatial organization into separate sub-areas allows for selected, rather than dictated routes through the space. Such a spatial organisation allows women engaged in any activity or inhabiting the public space, to open up and stroll.

In general, the "simple" granite blocks are preferred by individual users or pairs, in opposition to the platforms which are more regularly used by groups or pairs, who settle for lunch, chat, smoke, read, sleep..

The table element is the only "object" apart from the granite blocks where we observed a large number of users settling on their own, and in particular women who remain for longer than just a simple pause. Hence, this predetermination of usage gives authorisation to all to come to work, eat lunch, read, repose, even individual women ..., thus facilitating encounters and "common" usage, meeting / exchanges between people who do not know each other.

Eating in the square, male and female students and users particularly favour the large table and the spaces where it is possible to have lunch. We noted various strategies for eating, reading, working on both the granite blocks and timber platforms which demonstrated this additional need for a varied typology of urban objects.



PROPOSE / OBSERVE
07.2017 > 06.2018
WORKSHOPS - EVENTS

The Place du Panthéon is a photogenic and cinematographic place... and without cars, everything becomes possible!

In parallel with the spatial design, our mission was also to activate and animate the space.

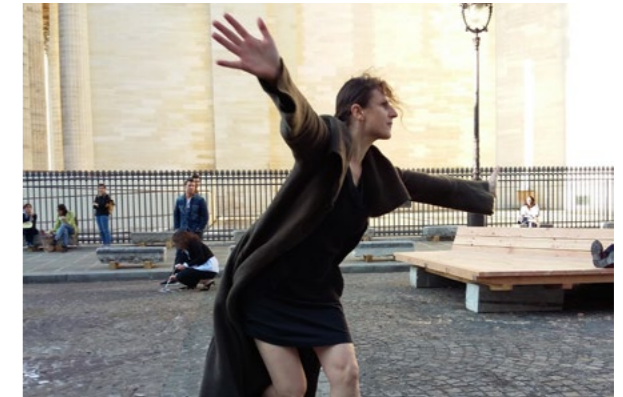
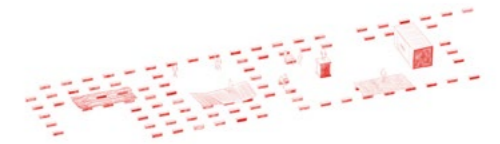
In order to reach the greatest number of people, we first built and installed an exhibition on the railings of the Monument which explained:

- the context of our engagement
- the collective
- the objectives of our active approach
- the desired reactions
- etc.

We then organized round table discussions on the topic of re-use, tactical urbanism; developed an artistic and spatial programme for the square with a class of primary school pupils and animated various workshops.

Finally, during a feminist weekend, we invited feminists to appropriate and hold the space, and speak out.

In addition to the everyday practices of the spaces, all these events, all these people: artists, male and female dancers, collectives, performers, DJs, marching bands,... provided the opportunity to demonstrate the possible of uses of this created space.



PROPOSE / OBSERVE
07.2017 > 06.2018
CONVENING THE INVISIBLE

The great invisible symbolism of the Place du Panthéon is that the central Monument is dedicated to great men. It seemed obvious to us, to initiate a project that reinstated the memory of women in general and their symbolic presence in public space.

On July 1st, 2017, we organised a Monumental Feminist Memorial event at the Place du Panthéon, "Une Place à Soi" (A place for self). Organised around a tribute to the feminist artist Judy Chicago, who manifested through a granite triangle on the ground evoking "The Diner Party", her iconic memorial piece on women, we undertook a collaborative project with passersby who wrote the names of women on the paving, which was designed to celebrate women from all walks of life, to make room for the unseen of history and to support all our contemporary women.

On the 1st of July, 2018, Simone Veil (French female lawyer and politician) "est entrée" (was enshrined) in the Panthéon, giving this date special meaning.

On July 1st, 2019, the symbolic presence of women in the Place du Panthéon will be solidified.

A Scientific Council co-led by the collective Les MonumentalEs and the Mairie de Paris (Paris City Council), including specialists in the history of art, science, and diversity, has determined that 200 women's names will be inscribed on the new street furniture in the square, with others to follow.

The work will be carried out by an artist, Claire Courdavault, and will pay tribute to women of all walks of life, of all cultures and throughout all centuries.

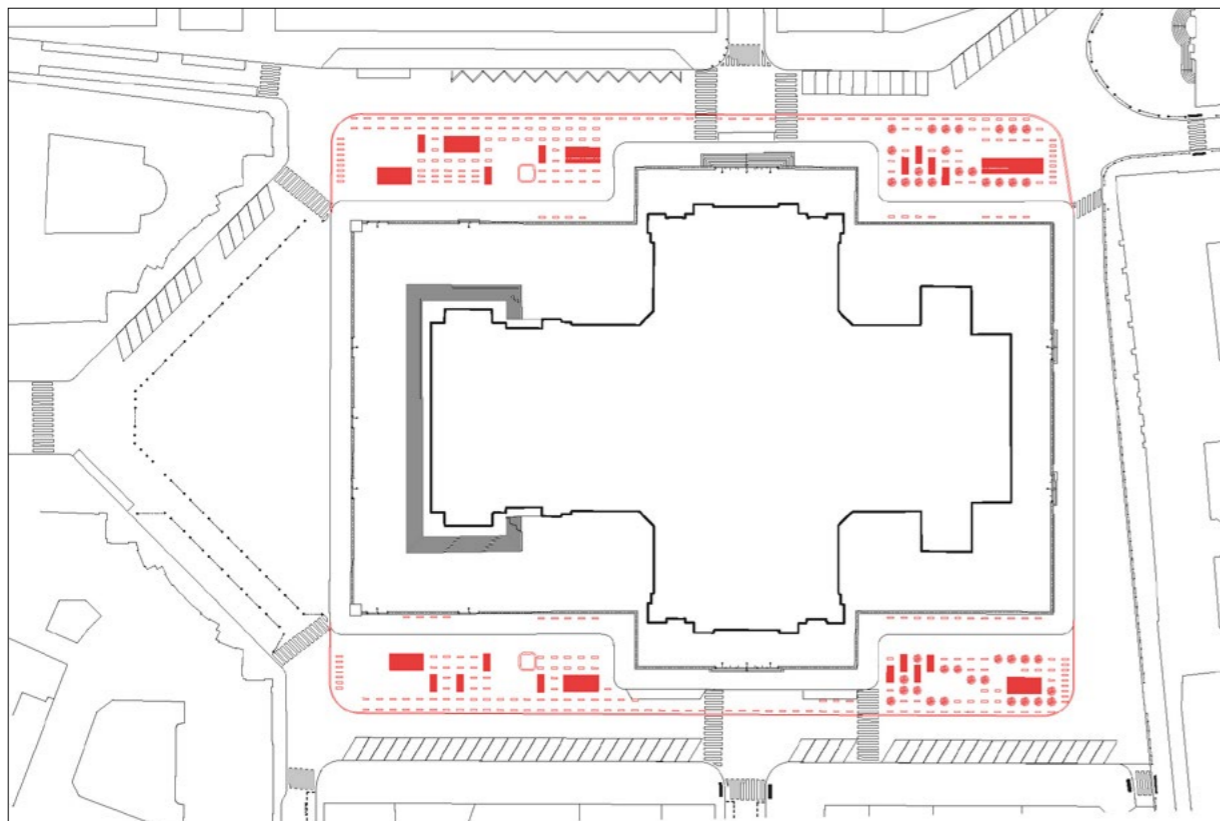
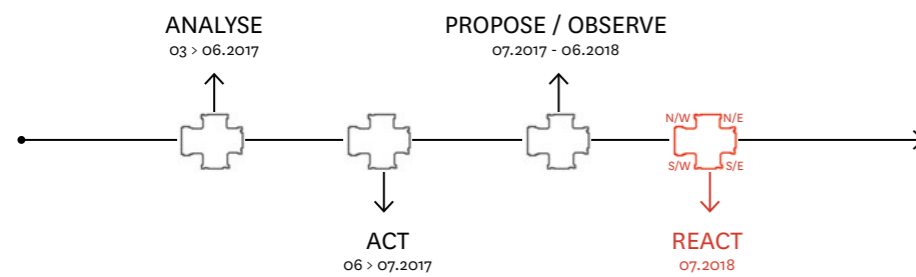
At the same time, this tribute will be extended to the rest of the square and other sites in Paris.



REACT

CONSTRUCTION - ACT 2

07.2018



REACT
CONSTRUCTION - ACT 2 - 07.2018
PLATFORMS AND BENCHES

"L'entrée" (the enshrinement) of Simone Veil into the Panthéon Monument on the 1st of July 2018 delayed the dates of the final construction, but reinforced the importance of a flexible construction, but reinforced the importance of a flexible approach. All the street furniture was easily removed and reinstalled for the second phase of construction in late July 2018 and all four quarters of the Place du Panthéon were furnished.

The observation phase showed that the elements are widely used by male and female students who work, eat, relax, discuss and play and by tourists who take a rest, by Parisians who have rediscovered the pleasure of a peaceful and welcoming space by taking advantage of new points of view on the Monument.

The enthusiastic feedback reassured us to persevere in the direction we had taken during the first phase, while also implementing a number of significant improvements to the project, for example, public meetings and exchanges with local residents.

- The design of the timber platforms have been refined by adding metallic structural elements and by using thinner timber sections for decking that make them lighter.
- The durability of the structures has been reinforced by a technique of construction with screws not being visible, suggested by the carpenters of the city of Paris, allowing them to maintain the site more easily.
- The construction of double benches with back support meets comfort expectations of the users, particularly older people.

↓ Ergonomic platforms



↓ New, more comfortable benches with backrests



A large table
for eating or working...



REACT
CONSTRUCTION - ACT 2 - 07.2018
REVEGETATION

In the rear two quarters of the Place du Panthéon, we wanted to introduce trees into the grid, echoing in particular Lycée Henri IV garden that is visible from the square.

Despite favourable pedology: open ground, free of the constraints of underground services or infrastructure, permanent plantations have not yet been authorized by the architects managing the historic buildings of France.

We have therefore opted to demonstrate by doing, by bringing trees in large planters into the square, with the desire to emphasize the relevance of a vegetative presence in this place.

40 trees now complete the composition while providing shade and freshness, in response to a strong demand expressed by all respondents.



REACT

CONSTRUCTION - ACT 2 - 07.2018

"PERENNIAL MOMENTARY"

Designing a scheme in this highly symbolic, patrimonial context with political opposition is without a doubt the first challenge we faced.

The resistance, from some, to metamorphose the square has however not impeded our action, convinced as we are of the legitimacy in reclaiming the public space for the benefit of pedestrians.

Close to an artistic performance, this project has opened up a field of reflection on space, towards a finer and more sensitive notion of art in cities.

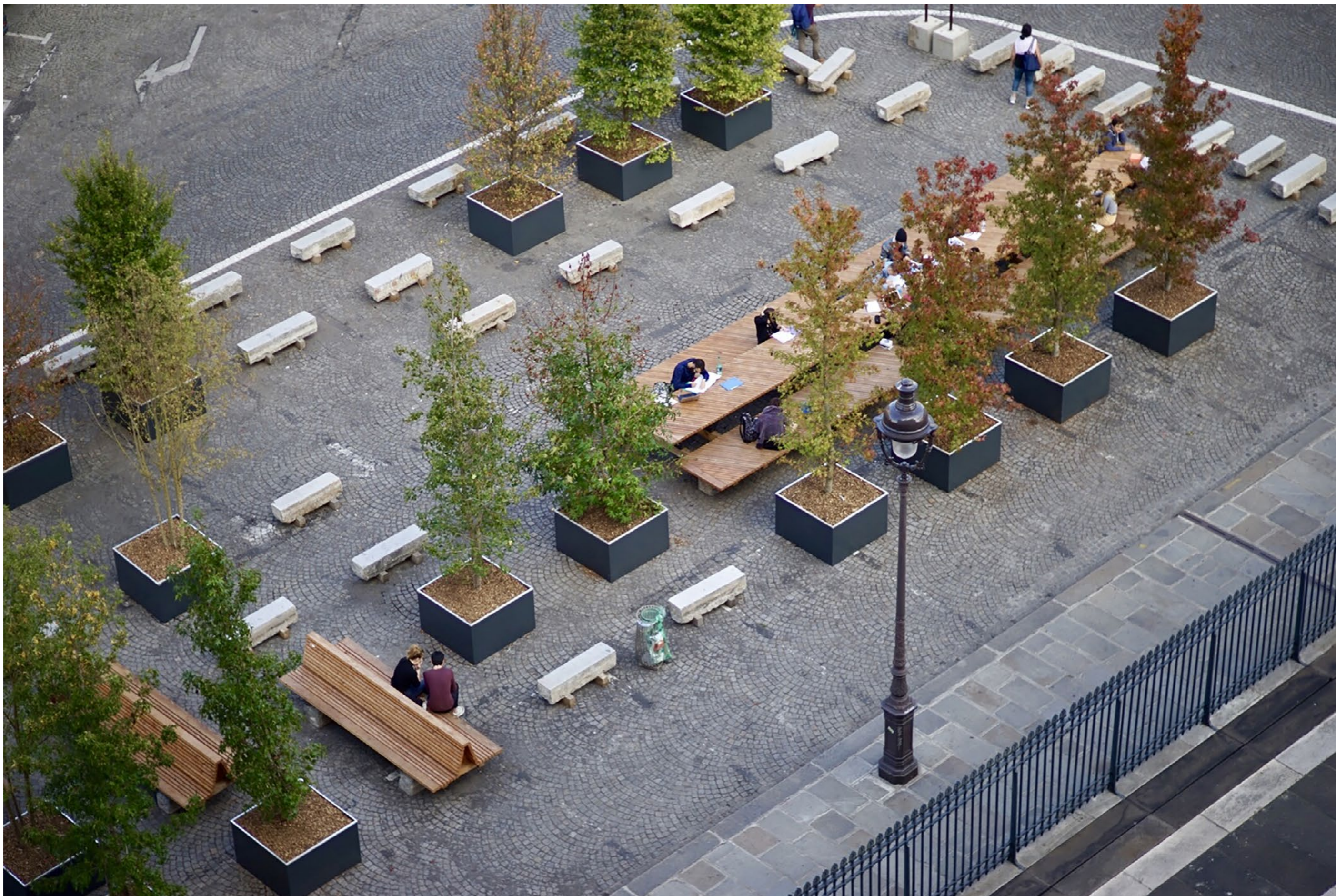
In line with voluntary frugal interventions and materials, this process has sprouted other possibilities for design conception other than those of the composition, history, the traces ... to express a poetic dimension.

The very ambiguity of this project built on the Place du Panthéon gives it its richness.

The power of the raw materials, combined with the simplicity of the repetitive device of a grid confirms the status of an installation whose temporality and permanence remain to be defined.

Replacing cars, this new powerful public space, economically efficient and rich in its diversity of uses is returned to the inhabitants, students, passersby and tourists of all genders.





Program	<p>Co-conception, co-construction mission for the development of the Place du Panthéon.</p> <ul style="list-style-type: none"> - Recreate links between the Panthéon and the edges of the square. - Make the square more welcoming and lively. - Give more space to pedestrians. - Provide new services in the public space. - Improve co-use between different modes of transport. - Rearrange the parking. - Requalify spaces using vegetation. - Reinforce accessibility for all users. - Improve access for the neighbourhood.
Client	<p>Ville de paris Michèle Zaoui, Jean Christophe Choblet, Eric Debarle Frédérique Martin-Bassi, Eric Leroy, Samuel Colin-Canivez - (D.V.D)</p>
Ateliers de ville de Paris	<p>Centre de Maintenance et d'Approvisionnement (CMA): Eric Crespin T.A.M.: Didier Garel, Joaquim Pereira, Jean-Marc Carpenters : Patrick Forest</p>
Location	Place du Panthéon 75005 Paris - Fr
Surface area	5 000m²
Completion	1 st July 2018
Specificities	<ul style="list-style-type: none"> - 1 prefiguration - 1 launch event - 1 feminist weekend - 2 participatory workshops - 2 public meetings - 32 letters - 1 350 participants in one of the 15 actions of the collective - 40 kerbs - 8 created platforms - 550 hours of social insertion work

Project management

Landscape architect

Architects / builders

Gender specialists

Social insertion
and sustainability

Graphic artist

Infrastructure

Reintegration companies

Contractors

Photography

Video

Les MonumentalEs

Emma Blanc
www.emmablanc.com
project manager : Emmanuelle Blanc
landscape architect : César Bazin
Caroline Mercier, Solène M'Ba, Laure Verdier, Estelle Goutaudier, Laetitia Leinartz

Collectif etc
www.collectifetc.com
project manager : Cédric Bouteiller, Julien Abitbol
team : Zélia Bobillier, Lucas Hadjimichalis
Charles, Philippe, Dounia, Serge, Lucas, Madeleine...

Genre et Ville
www.genre-et-ville.org
Chris Blache, Pascale Lapalud, Eloise Kling

Albert et compagnie
Marc Sériés

Emmanuelle Guyard
www.manue.libratoir.fr

Ville de paris

Travail et Vie
ESAT de la Bièvre

Pépinière Verte Ligne - provision of trees
Metalflore - metal planters

Philippe Ruault
Philippe Colin-Canivez
Collectif Etc - Lucas Bonnel
Les MonumentalEs

Pavillon de l'Arsenal
Année Zéro : Stéphane Demoustier, Lucas Bonnel
www.pavillon-arsenal.com





Les Monumentales

Emma Blanc Paysagiste

5 cité Durmar 75011 Paris - France

00 33 1 48 07 17 55 - emmablancpaysagiste@gmail.com

www.emmablancpaysagiste.com

Collectif etc

Ambassade du Turfu – 3 rue Raymondino 13003 Marseille – France

00 33 6 15 85 06 40 - contact@collectifetc.com

www.collectifetc.com

Genre et Ville

contact@genre-et-ville.org

www.genre-et-ville.org

Press relations

Atelier Regular

info@a-regular.com

00 33 5 62 21 40 18

All reproduction, total or in parts, of this document is forbidden
without prior authorization of Emma Blanc, Collectif etc, or Genre et Ville.
Graphic conception et circulation: Atelier Regular.
Translation: Paul M.H Smith